

# Contract Report



## Project: Major World wide Semiconductor Manufacturer based in Austin, Texas.



*Existing burner/boiler Setup prior to retrofit*

The customer's initial requirements were:

- To increase reliability of boiler house plant
- To increase boiler house efficiency
- To reduce fuel costs
- To reduce harmful emissions

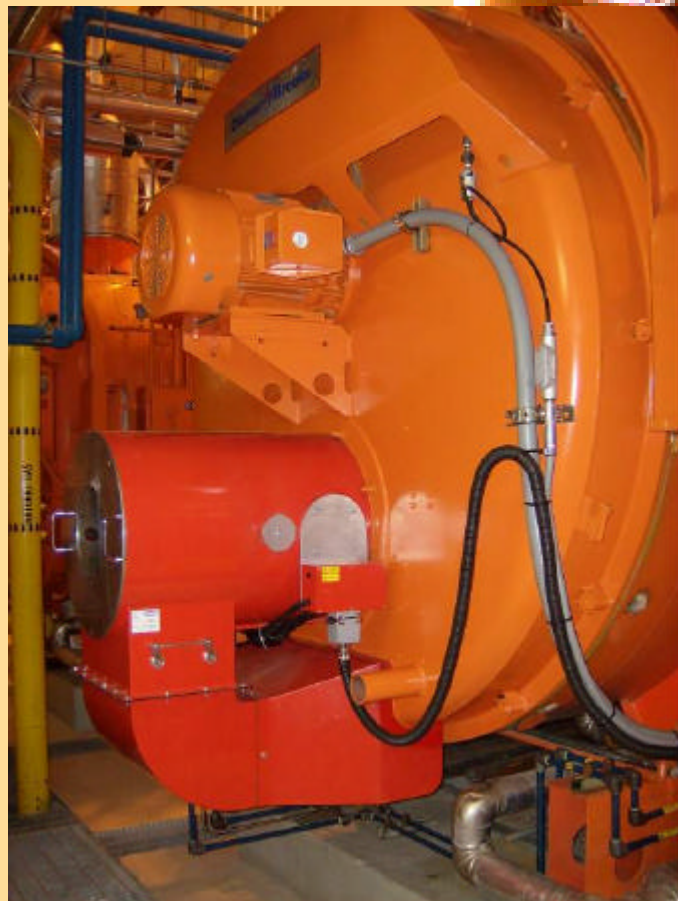
After discussion with the customer we qualified our joint expectations to be: -

- To reduce O<sub>2</sub> levels from 8 – 12 %
- Reduce annual gas consumption
- Reduce electrical consumption

Quotation was supplied, quote was accepted, PO was raised for the new equipment.

After a complete retro fit of the Limpsfield burner to the Cleaver Brooks boiler the following results were achieved: -

- O<sub>2</sub> levels less than 2.5% throughout the firing range
- Gas consumption lowered by 6 cubic feet per hour or \$46,500 annually
- Electrical consumption lowered by \$12,000 annually by using a Variable Speed Drive to control the speed of the Forced draught combustion air fan



*Limpsfield burner retro fitted to the Cleaver Brooks Boiler.*